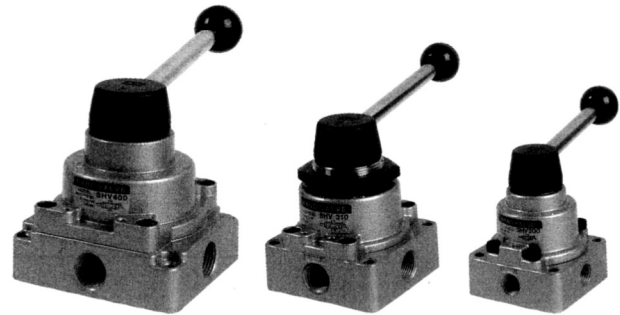


◆ SHV Series



SHV400-04

SHV310-03

SHV200-02

● How to order

SHV 2 0 0 - 02

1 Hand Valve

2 Body size

2 - 1/4

3 - 3/8

4 - 1/2

3 Piping and Mounting method

Mark	Piping	Mounting
0	Side	Body
1	Side	Panel

4 Position Symbol

0 - 3position (Closed center)

2 - 2position

5 Port Size

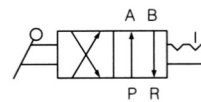
02 - Rc(PT)1/4 "

03 - Rc(PT)3/8 "

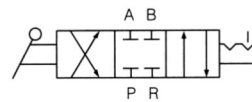
04 - Rc(PT)1/2 "

06 - Rc(PT)3/4 "

● Symbol



2 position



3 position Closed Center

● Specification

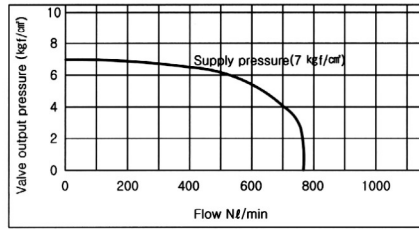
Fluid	Compressed Air
Max. supply pressure	1.5MPa [15.3 kgf/cm ²]
Max. operating pressure	0~0.97MPa [0~9.9 kgf/cm ²]
Ambient temperature	5 ~ 60°C
Operating angle	90°

● Precautions

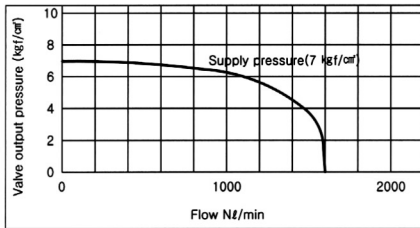
- ① P and R position can not be changed reciprocally when piping.
(Valve plate can be detached)

FLOW CHARACTERISTICS

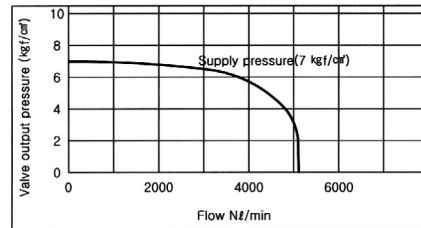
SHV 200



SHV 300

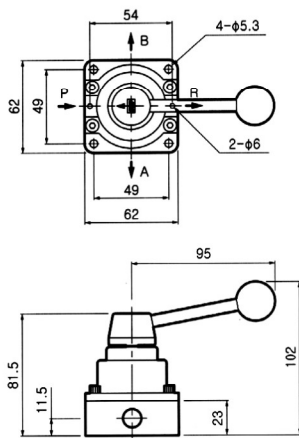


SHV 400

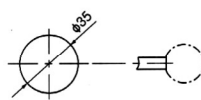


DIMENSIONS (mm)

SHV 200

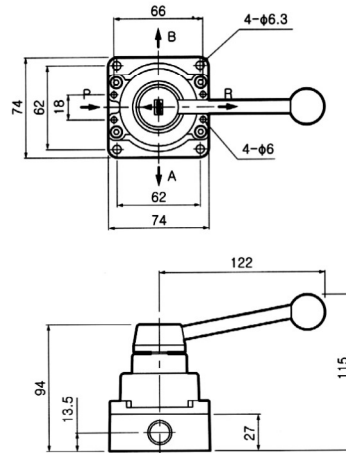


Panel cut dimension

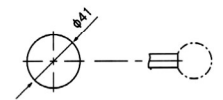


Max. panel thickness 3.5mm

SHV 300

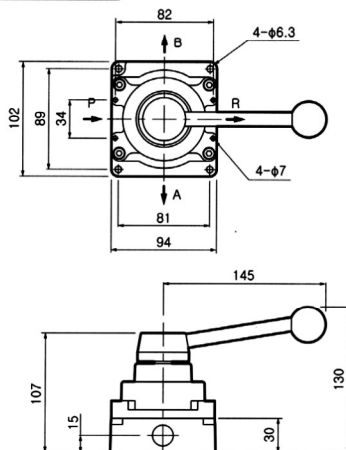


Panel cut dimension

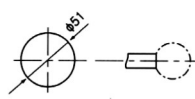


Max. panel thickness 3.5mm

SHV 400-04

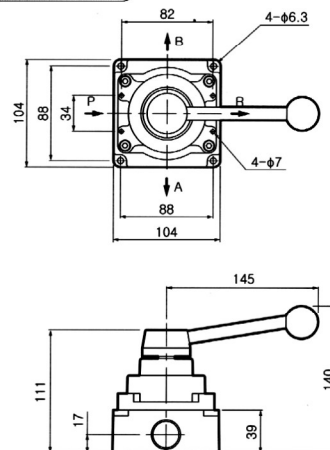


Panel cut dimension

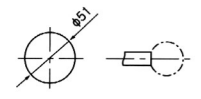


Max. panel thickness 8mm

SHV 400-06



Panel cut dimension



Max. panel thickness 8mm